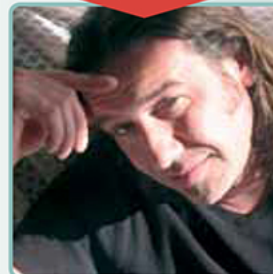


"It's important that the EC
doesn't rise to much in the slabs"



by Karel:
Gardener
& Grower

		Cultivation period In weeks	Light / Day In hours	Hydro Vega ml A/ 10 litres ml B/ 10 litres	Hydro Flores ml A/ 10 litres ml B/ 10 litres	RHIZOTONIC ml/ 10 litres	CANNAZYM ml/ 10 litres	CANNABOOST ml/ 10 litres	PK 13/14 ml/ 10 litres	EC + in mS/cm	EC Total in mS/cm
GROWTH	VEGETATIVE PHASE										
	Start / rooting (3 – 5 days) Make the substrate wet	<1	18	10-20	-	40	-	-	-	0.7-1.1	1.1-1.5
	Vegetative phase I Plants develop in volume	0-3 ¹	18	15-25	-	20	25	-	-	0.9-1.3	1.3-1.7
FLOWERING	Vegetative phase II - Up to growth stagnation after fructification or appearance of the formation of flowers	2-4 ²	12	20-30	-	20	25	20 ⁵	-	1.2-1.6	1.6-2.0
	GENERATIVE PHASE										
	Generative Period I - Flowers or fruits develop in length. Growth in height achieved	2-3	12	-	25-35	5	25	20-40	-	1.4-1.8	1.8-2.2
	Generative period II - Development of the volume (breadth) of flowers or fruit	1	12	-	25-35	5	25	20-40	15	1.5-1.9	1.9-2.3
	Generative Period III - Development of the mass (weight) of flowers or fruit	2-3	12	-	15-25	5	25	20-40	-	1.0-1.4	1.4-1.8
	Generative Period IV - Flowers or fruit ripening process	1-2	10-12 ³	-	-	-	25-50 ⁴	20-40	-	0.0	0.4

1. This period varies depending on the species and number of plants per m2. Mother plants remain in this phase until the end (6 – 12 months).
2. The changeover from 18 to 12 hours varies depending on the variety. The rule of thumb is to change after 2 weeks.
3. Reduce hours of light if ripening goes too fast. Watch out for increasing Relative Humidity
4. Double CANNAZYM dosage to 50 ml/10 litres, if substrate is reused.
5. 20 ml/ 10 litres standard. Increase to a maximum of 40 ml/10 litres for extra flowering power

EC: EC+ value is based in mS/cm when EC water = 0.0 by 25°C, pH 6.0
Add the EC of the tap water that is used to the recommended EC!
The EC total in the example is with tap water with an EC of 0.4
pH: Recommended pH is between 5.2 and 6.2
Adding pH- can increase EC.
Use pH- grow in the vegetative phase to lower the pH.
Use pH- bloom in the generative phase to lower the pH.

The guidelines in the table aren't an iron law, but can help novice growers to develop a sophisticated fertilisation strategy. The optimum fertilisation strategy is further determined by factors such as: temperature, humidity, plant species, root volume, moisture percentage in substrate, water dosage strategy, etc.